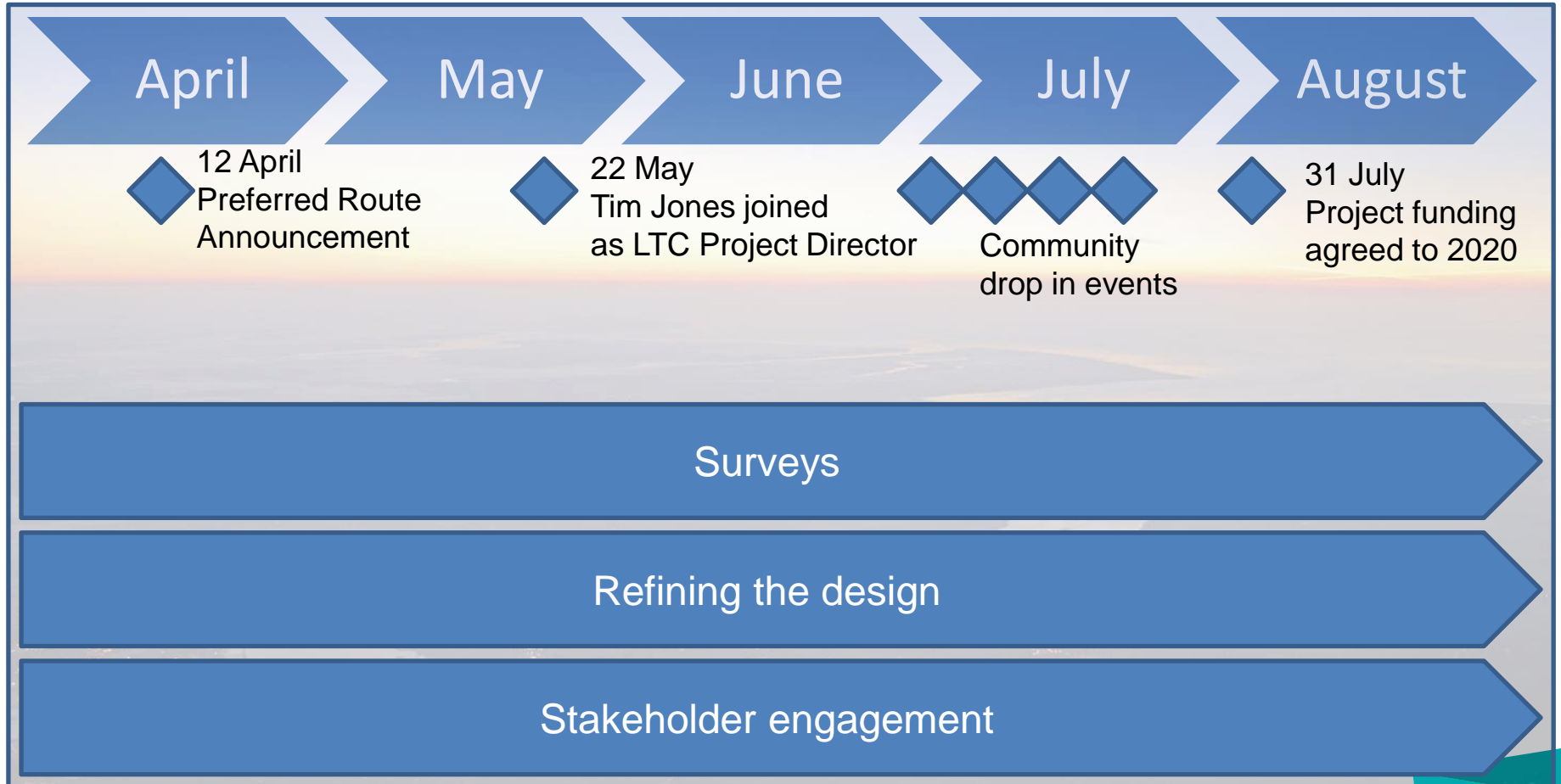


Lower Thames Crossing

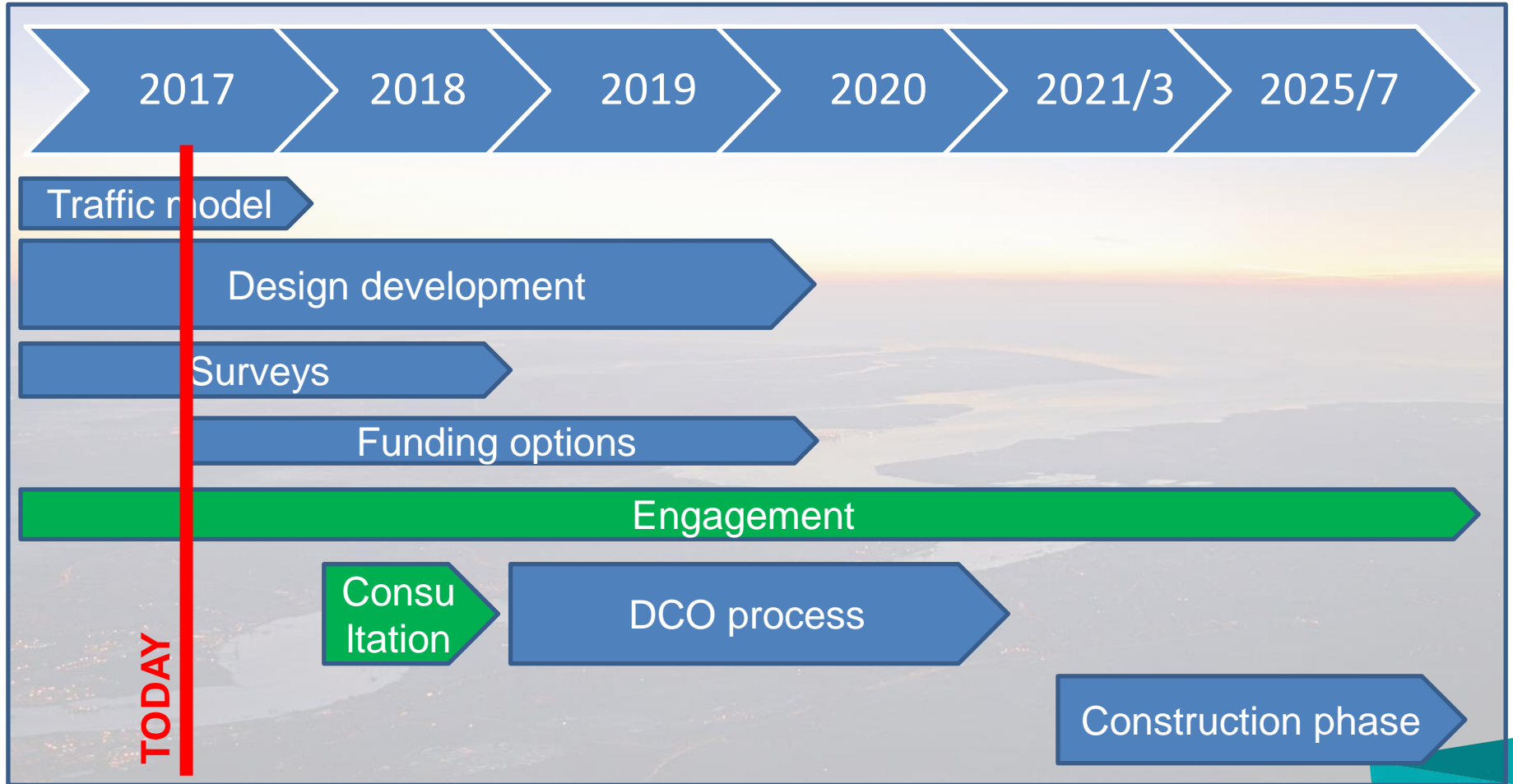
Scheme update
September 2017

Project update

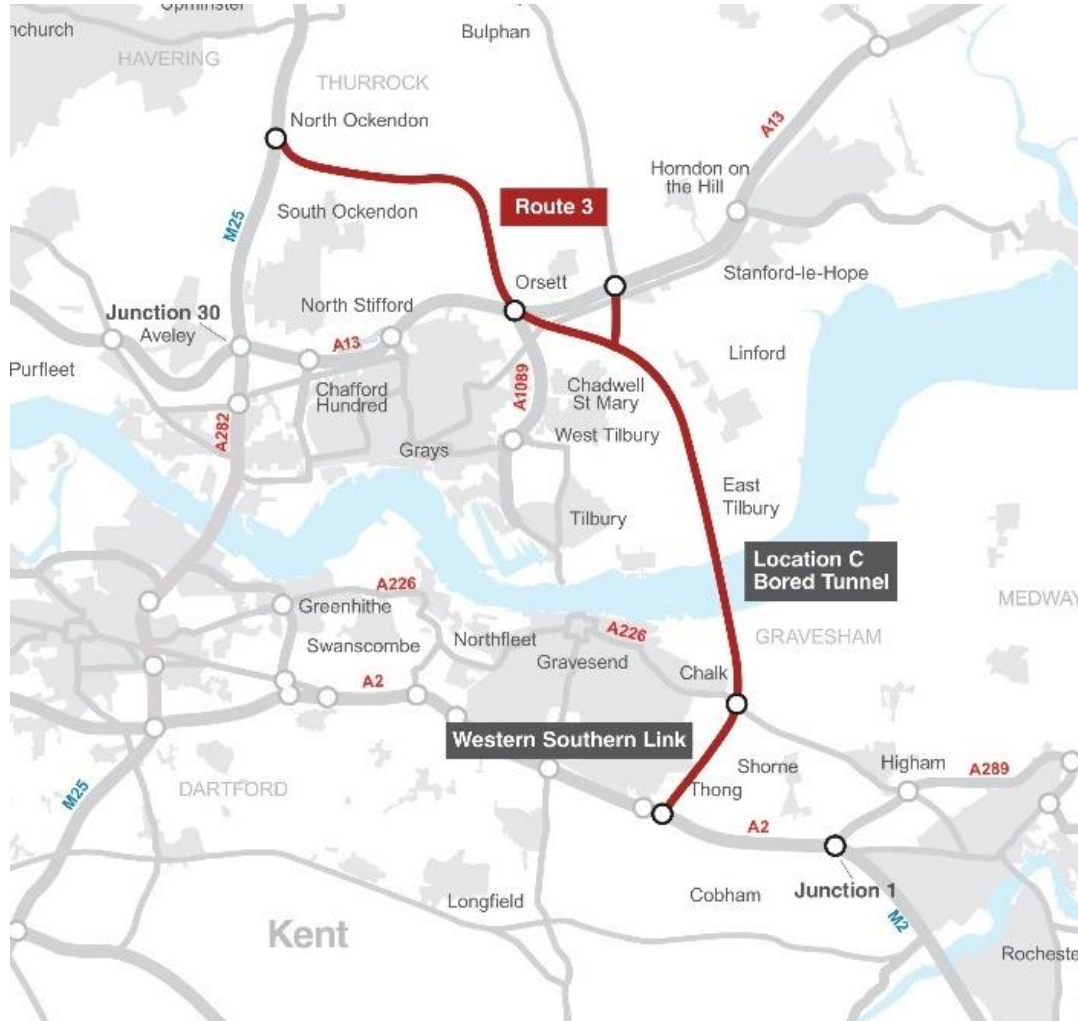
Where are we now



Project timeline



Route and design



Response to Consultation promise to review:

- Traffic modelling
- Junctions: M25, A13, Tilbury, A226, A2
- Dual or triple lanes
- Tunnel length, portal locations
- Noise
- Air quality

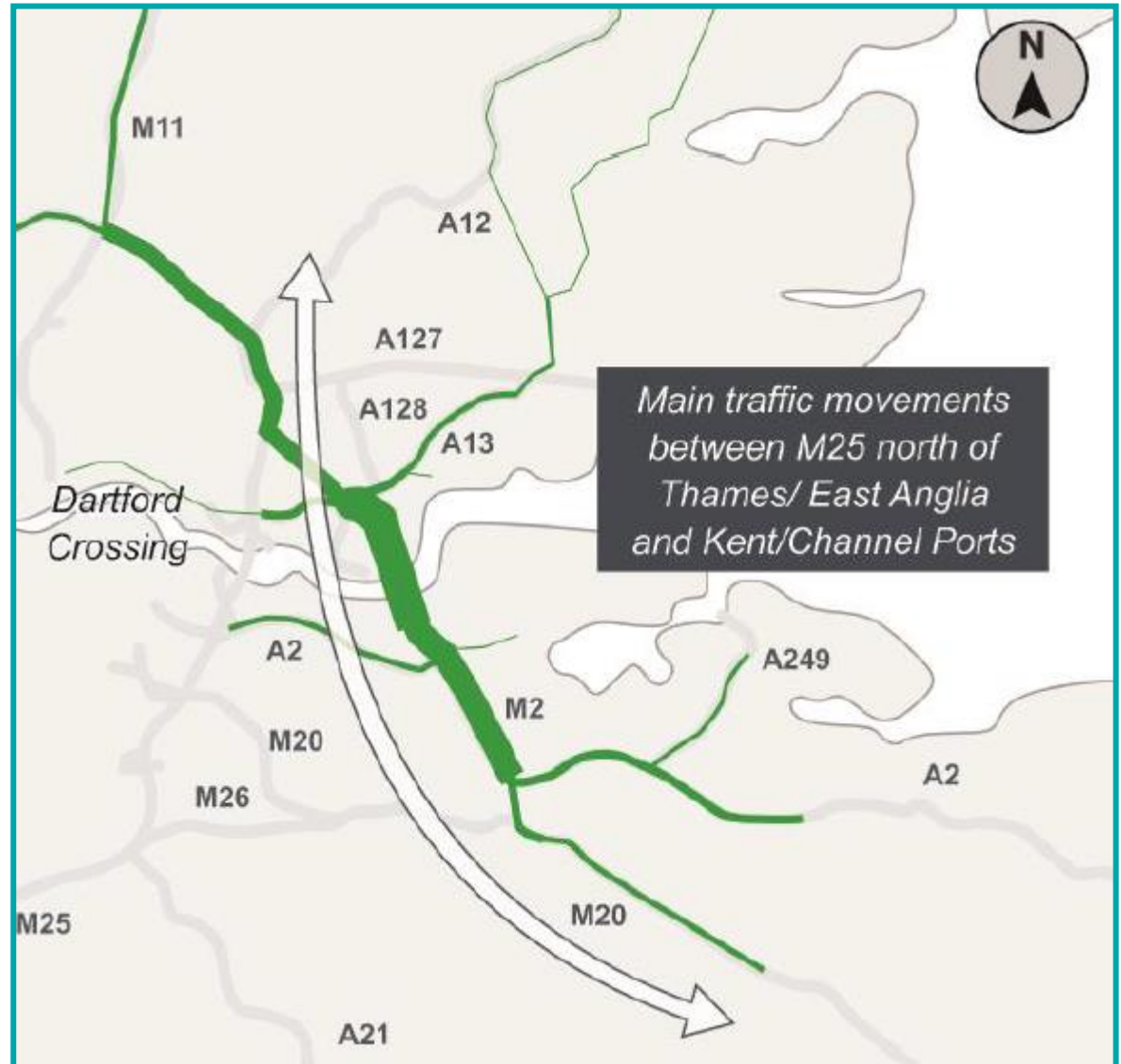
Traffic model

Traffic forecasting - overview

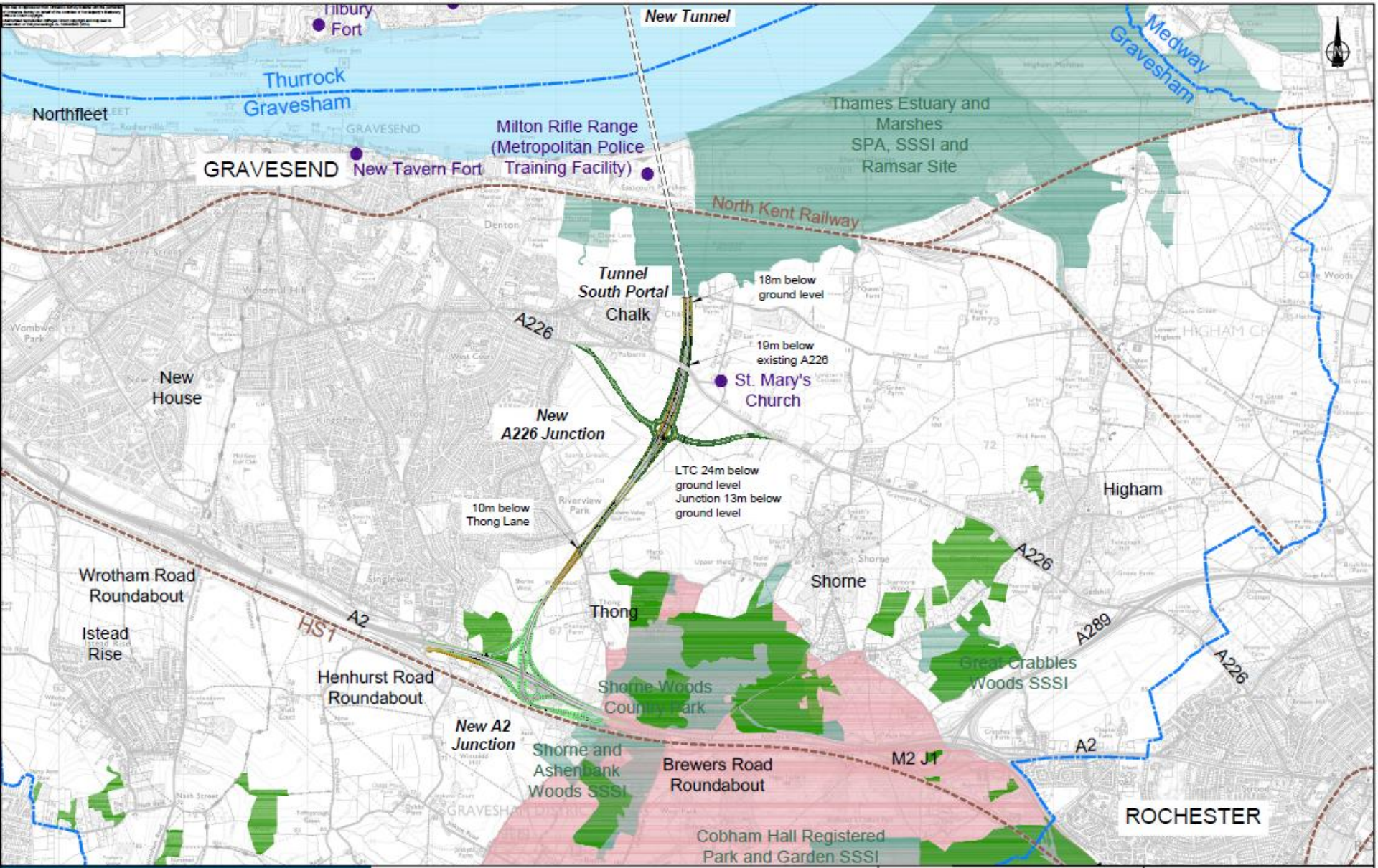
- Traffic modelling has been a key element of the scheme development
- The model covers an extensive area and forecasts changes in traffic movements and journey times in the future both with and without the Lower Thames Crossing scheme and alternatives
- The forecasts have been used to examine the operation of the scheme and to assess its economic and environmental impacts
- Work is currently taking place to update the traffic model based on new travel data derived from mobile phone data and other traffic information
- Traffic forecasting with this new model will be completed around the end of the year

Predicted users of Routes 3, 4

The forecast origins and destinations of traffic using the LTC in the morning peak, 2041. Line thickness illustrates the volume of LTC users on each road.



Design update



LTC PRA 2017

Development Consent Order

Development Consent Order (DCO)

Parliament

Planning Act 2008

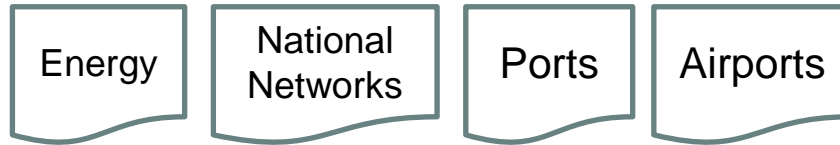
Secondary legislation

Process
Governance
Institutions

Secretaries of State

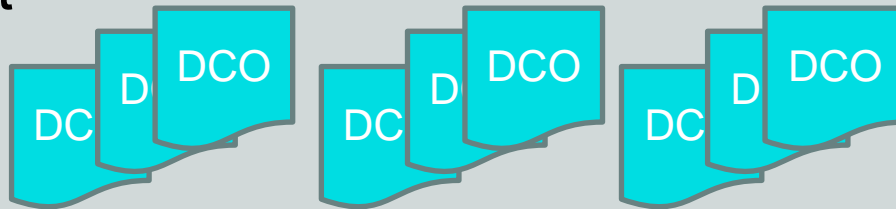


National
Policy
Statements



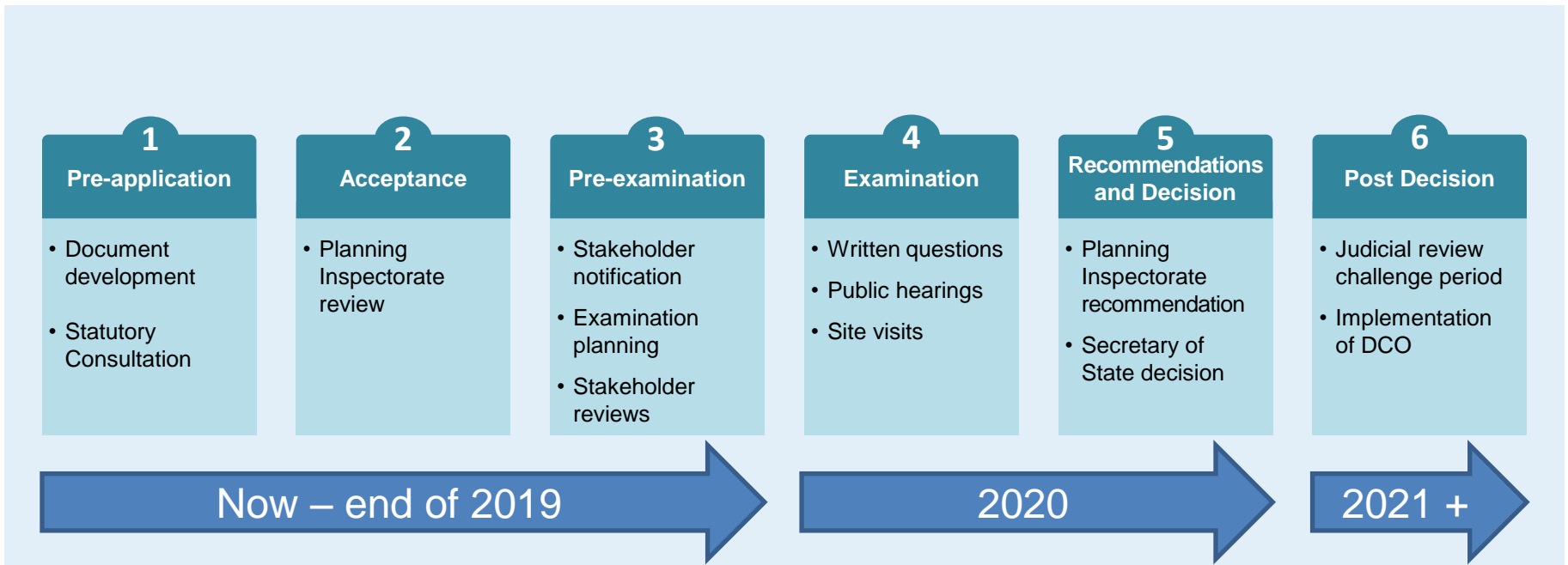
National Strategies
(size, type, etc.)
Policy frameworks
(decision criteria)
Localisation
(suitable and unsuitable
areas)
Appropriate mitigations

Applicant



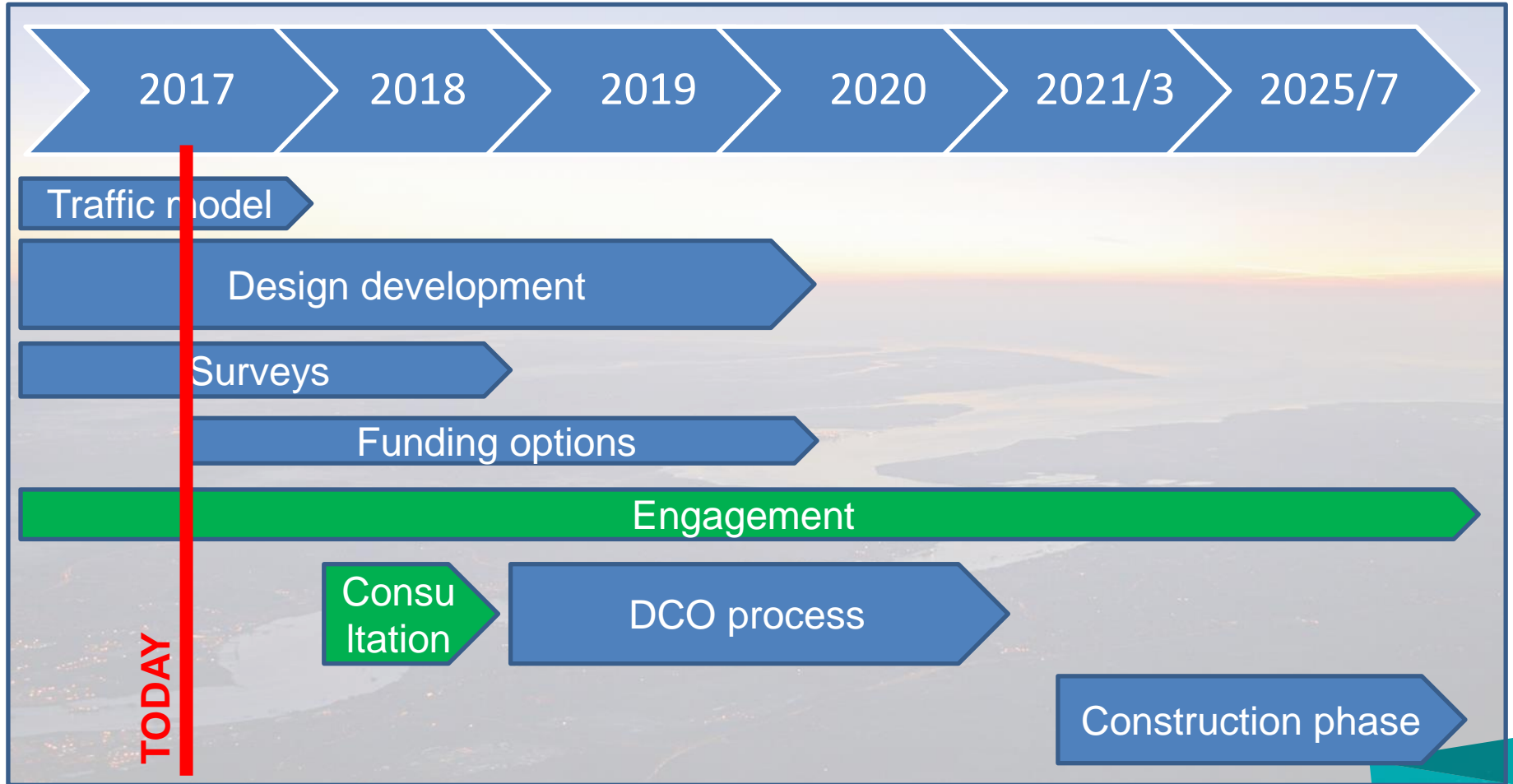
Approved project
Legal powers
Further approvals
(Requirements)
Mitigations

DCO process – key stages



Engagement

Project timeline



Engagement



Benefits and legacy

What would you and your communities like to see the scheme bequest to the area?

- For communities and people
- For the environment
- For other road users
- For...?

In summary - the coming months

Over the coming months...

Surveys

Traffic model
v3

Wider
network

Tunnel
length

Dual 3 lanes
or Dual 2?

A2, A13, M25
junctions

Tilbury
junction?

A226
junction?

Explore leaving a positive legacy: communities, skills,
environment, non-motorised road users...

Public engagement

Prepare for 2018 public
consultation

Get in touch



Twitter: @lowerthames



Website: www.lower-thames-crossing.co.uk



Phone: 0300 123 5000



Email: lrc@highwaysengland.co.uk